

Jumeirah
Living
MARINA GATE

JUMEIRAH™ COMES TO THE MARINA





WELCOME TO JUMEIRAH LIVING MARINA GATE

Jumeirah Living Marina Gate combines the Jumeirah Group's luxury hospitality experience with Select Group's commitment to creating an exceptional standard of living. Never before have Marina residents had access to Jumeirah's impeccable standards for a curated lifestyle, coupled with the exceptional attractions found in one of Dubai's most captivating locations. 104 serviced apartments, 389 private residences and 15 villas present a range of exclusive opportunities to live a life characterised by unprecedented quality and flair.



CELEBRATED CITY

Dubai is a world-famous destination renowned for its stunning skyline and a wealth of exceptional attractions that delight residents and visitors in this dynamic city throughout the year. With a record-breaking 20 million people expected to travel to the iconic emirate by the arrival of the World Expo in 2020, Dubai continues to push the boundaries of creativity to develop an unparalleled environment to live, work and play.

Awash with historical and contemporary charms, as well as breath-taking natural and architectural beauty, the city blends its rich history with an ambitious future and the splendid environment is home to over 200 nationalities. World-class retail outlets, gourmet dining spots, an engaging cultural scene and exhilarating leisure pursuits all come together in one unforgettable destination where the best can only get better.



THE NEIGHBOURHOOD

Jumeirah Living Marina Gate represents the third and final tower of the prestigious Marina Gate community located at the original entrance to Dubai Marina, a place where residents can relax and appreciate the best that life has to offer in a luxurious waterfront setting. The picture perfect position affords stunning views over the emerald bay with its array of yachts and a palm-lined promenade set against the beautiful backdrop of the majestic Marina skyline.

Life at the heart of one of Dubai's most sought after locations is the height of convenience with the tram, metro and water taxis only a short walk away, and excellent transport links connecting residents to the rest of this fascinating city. A boat ride around the World Islands, Burj Al Arab Jumeirah or the other marina inlets provides a refreshing perspective of the area from the crystal clear seas.





MARINA'S BEST AT YOUR DOORSTEP

Direct access to the cosmopolitan Marina Walk opens up a world of leisure options for residents. Countless places to dine at, five-star hotels, intimate coffee shops and a variety of retail outlets including international supermarkets and stylish clothing boutiques add to the development's charm.

Anyone who appreciates an active lifestyle will love going for a jog around the water's edge, riding a bike along the bustling promenade or spending the day fishing on the Arabian Gulf. Beauty salons, a polyclinic, children's play areas, and a nursery school complete the offering for an outstanding family-friendly environment.



THE VIEW

Nowhere captures the inspiring oceanic views quite like Dubai Marina. Towering skyscrapers overlook calm, blue waters and whichever level you gaze out, Jumeirah Living Marina Gate brings the panoramic waterfront spectacle to life from inside one of the area's most impressive new landmarks.

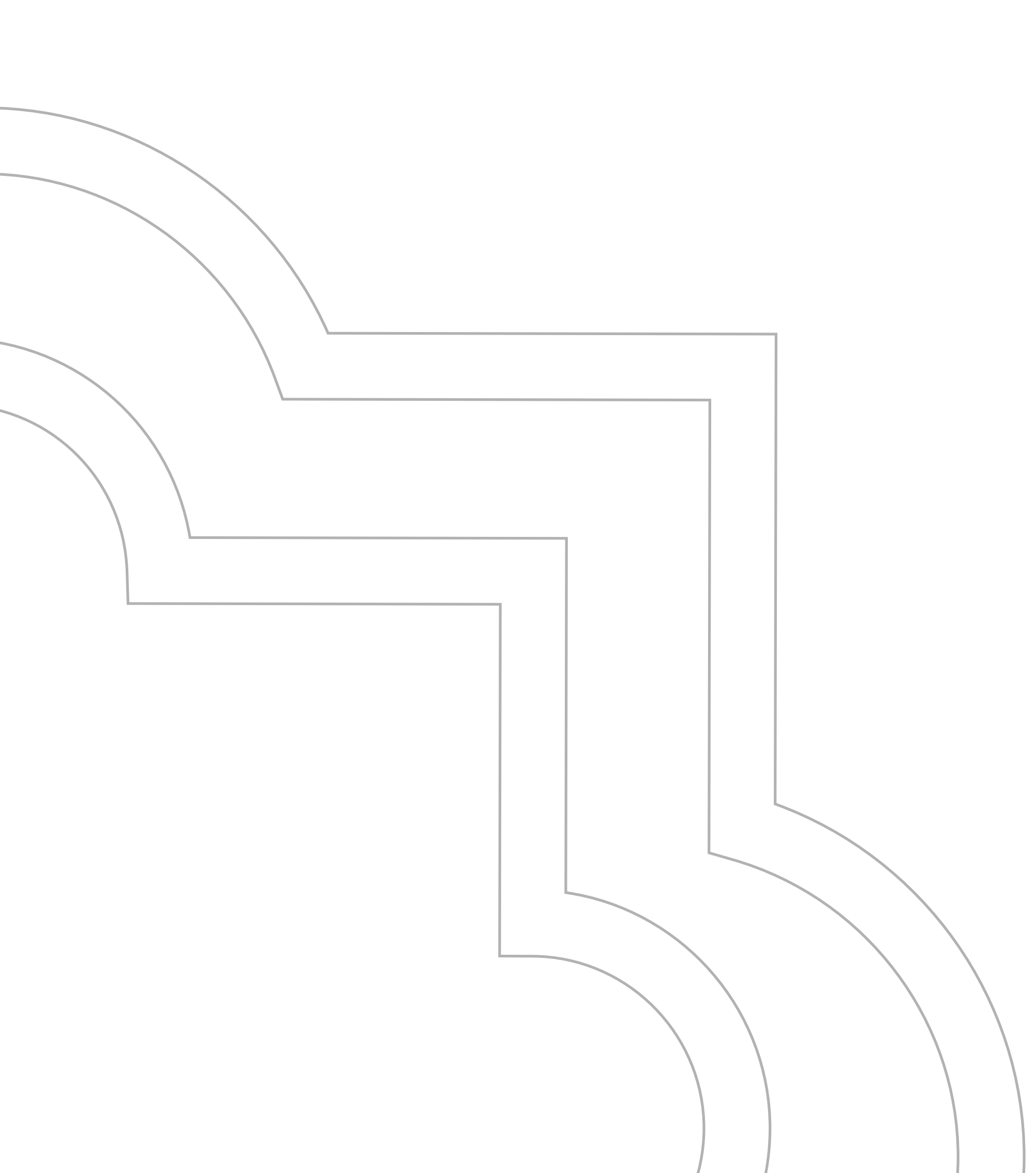


CURATED LIFESTYLE

Embodying Jumeirah's service philosophy, the residences will achieve unsurpassed standards of marina living. With a unique combination of prime location, effortless luxury and contemporary lifestyle, the development has been designed for discerning residents seeking everything they need in one place.

Exclusive sense of arrival and a lifestyle concierge service enhance the day-to-day experience, while every other detail has been taken care of to ensure residents are provided with the best of facilities.





AMENITIES & SERVICES

Jumeirah Living Marina Gate combines the privacy and comfort of home with the services and amenities of a luxury Jumeirah hotel. Residents will have access to a dedicated guest relations team including concierge, security, housekeeping and valet services.



SERENE RESIDENT'S LOUNGE

Conveniently located Resident's Lounge is an ideal place to relax and unwind in stylish executive surroundings. Views of the stunning Marina skyline, elegantly appointed interiors and impeccable service makes this the perfect setting for entertaining guests.



STATE OF THE ART FITNESS CENTRE

A good workout comes with a great view.

The state of the art gymnasium overlooks the bustling Dubai Marina and features the latest fitness and audio-visual equipment.

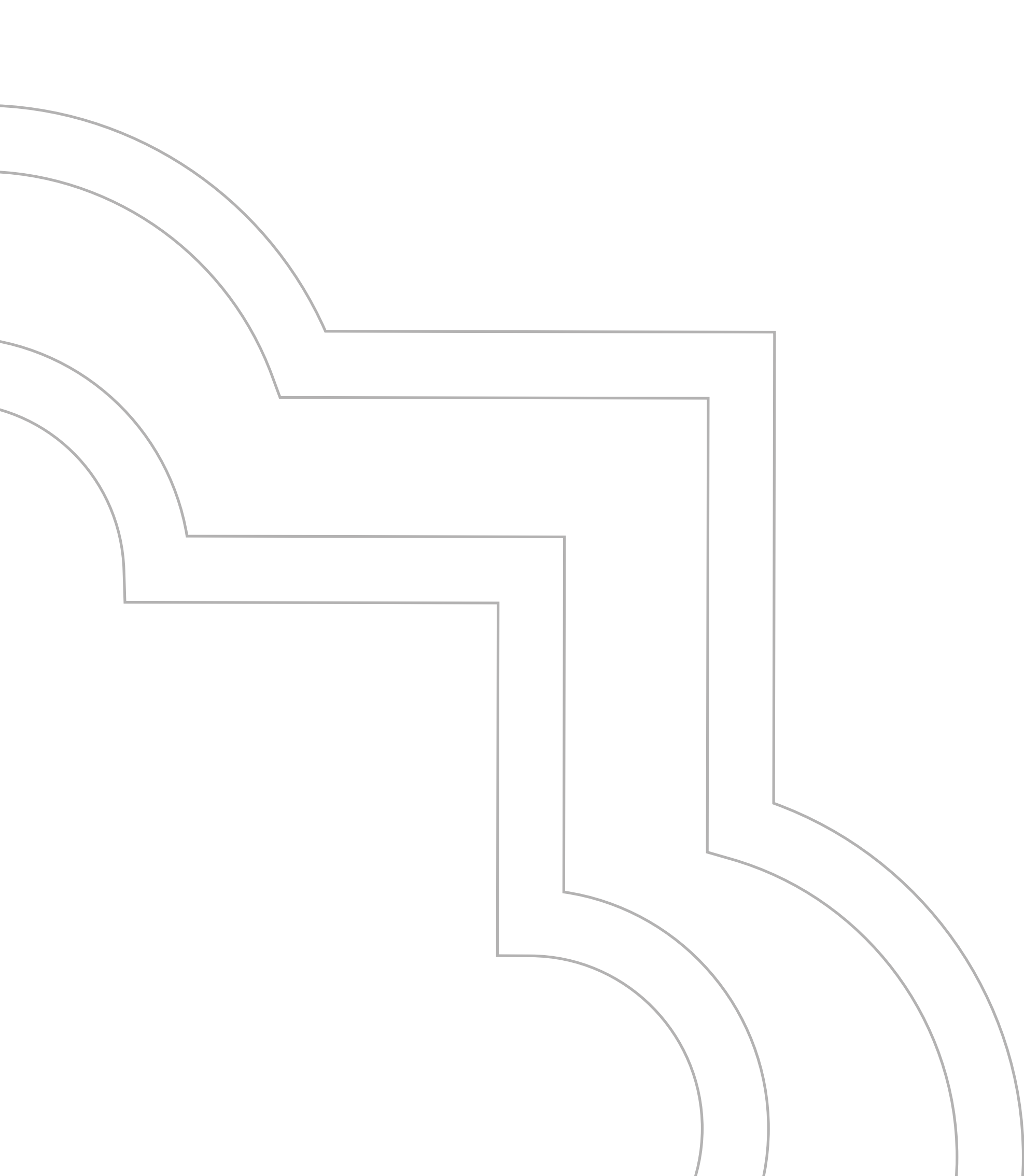




SPECTACULAR INFINITY EDGE POOL

Stunning temperature-controlled infinity pool manned by fully trained attendants for comfort and safety.





UNDERSTATED LUXURY THE PRIVATE RESIDENCES

The luxurious living destination has been designed to create a striking contemporary addition to the famed Marina skyline. Indoor spaces will be maximised with understated luxurious finishes and huge floor-to-ceiling windows will highlight the stunning views. Carefully planned communal areas link a seamless sequence of inviting spaces, incorporating public and private areas where residents can choose to relax, retreat or socialise.



EXECUTIVE STUDIO

ONE BEDROOM APARTMENT





ONE BEDROOM VIEWS

TWO BEDROOM APARTMENT





TWO BEDROOM KITCHEN

TWO BEDROOM BALCONY





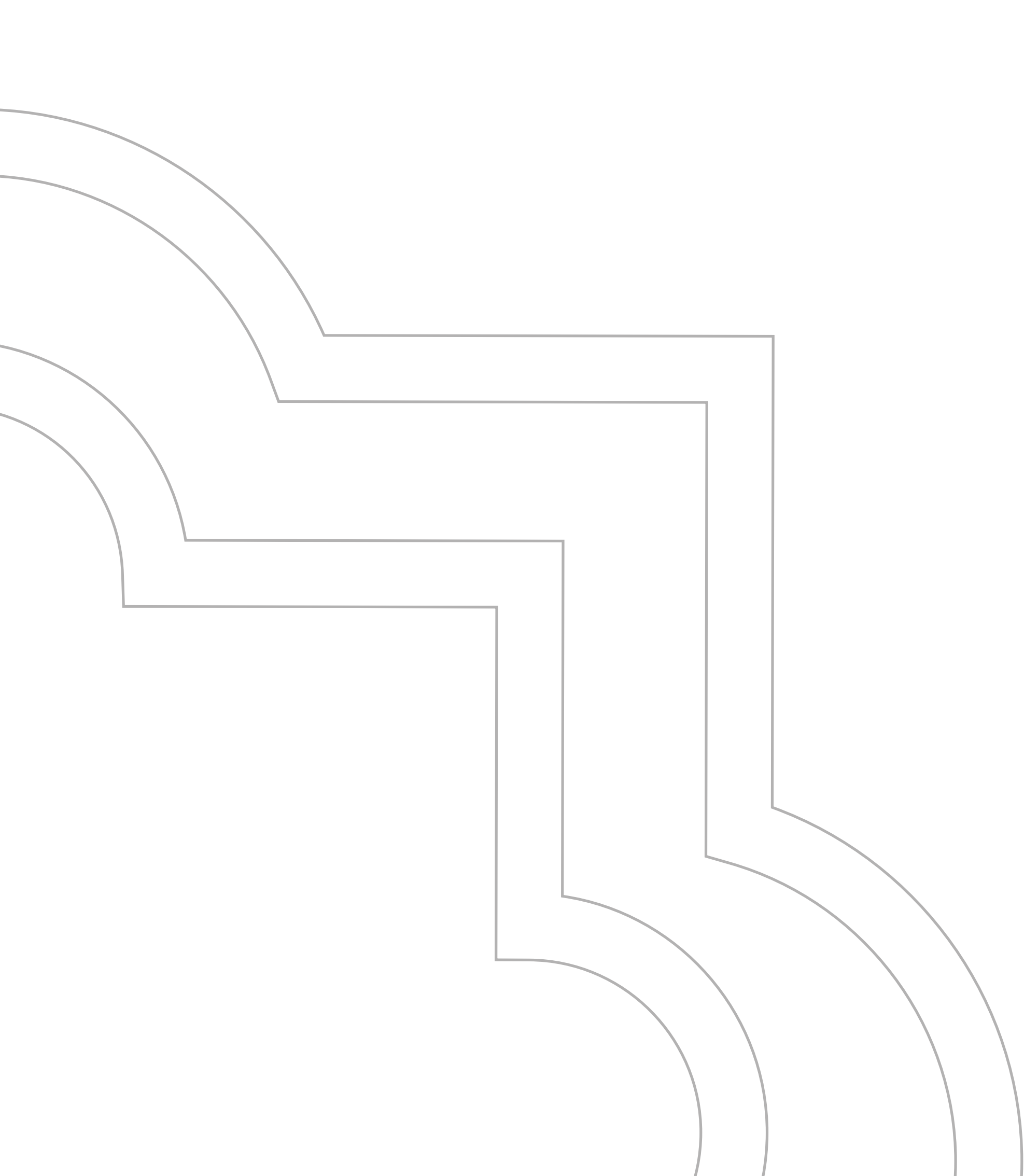
THREE BEDROOM APARTMENT

THE MASTER BEDROOM





THE MASTER BATHROOM



SUBTLE SOPHISTICATION THE VILLAS

Embellished with luxurious details, the finish and fittings in these exceptional duplex homes are in a class of their own.

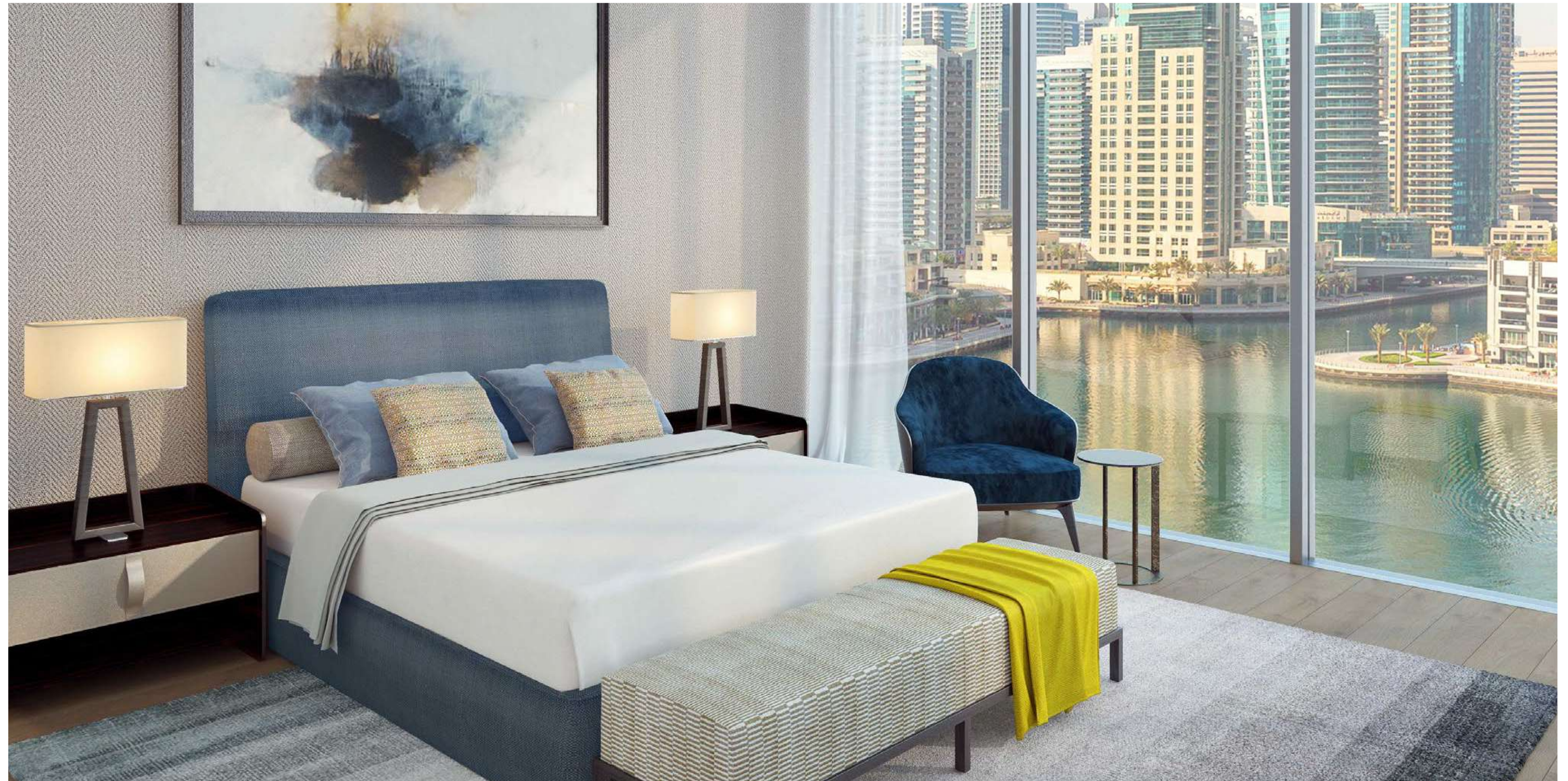
THE VILLA LIVING ROOM





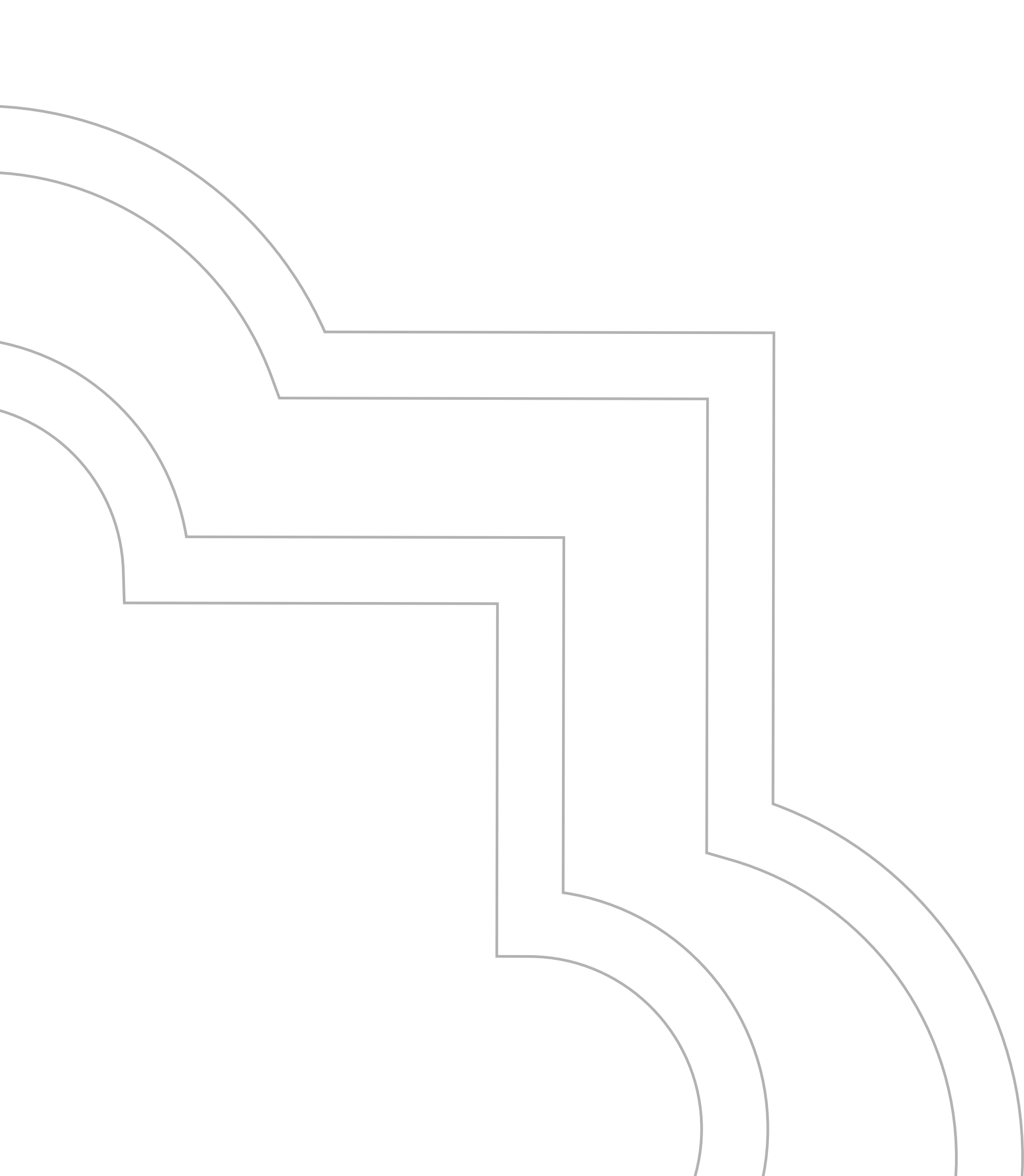
THE VILLA KITCHEN

THE VILLA
MASTER BEDROOM





THE VILLA
MASTER BATHROOM



LUXURY REDEFINED THE PENTHOUSE

The crown jewel of the development, the half-floor penthouse, is located on the 56th floor and is the epitome of luxury and comfort.

THE PENTHOUSE
LIVING ROOM





THE PENTHOUSE
DINING ROOM

THE PENTHOUSE
MASTER BEDROOM





THE PENTHOUSE
MASTER BATHROOM

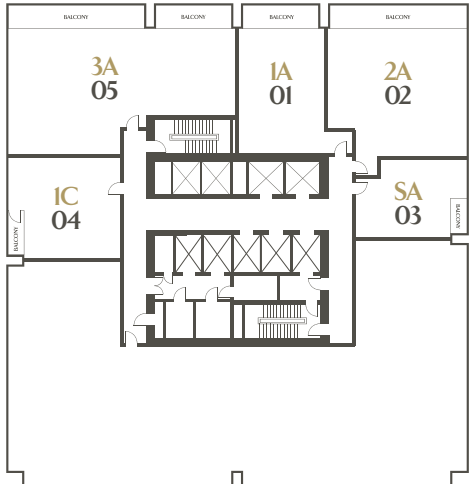
APARTMENT KEY PLANS



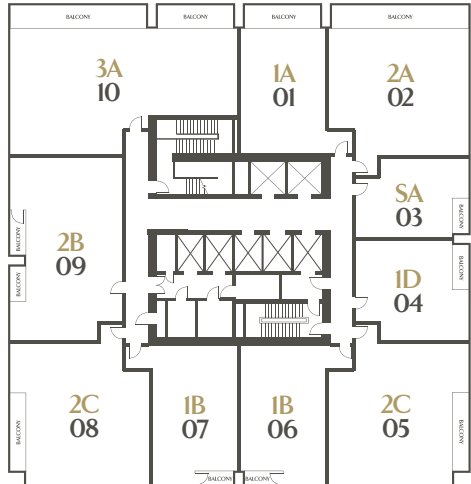
Marina View



Sea View



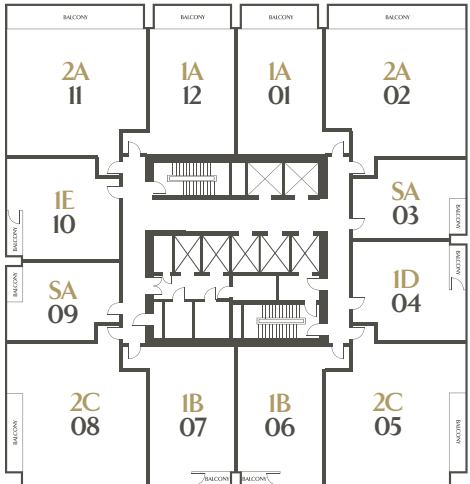
FLOOR TYPE 03, 04
LEVEL 19, 20



FLOOR TYPE 05
LEVEL 21



FLOOR TYPE 06
LEVEL 22 - 29



FLOOR TYPE 07
LEVEL 30 - 40



FLOOR TYPE 08
LEVEL 41, 42



FLOOR TYPE 09
LEVEL 43 - 55

SELECT GROUP

Select Group has been helping people create a secure future since 2002, through award-winning real estate and investment opportunities.

As one of the largest privately held real estate development and investment companies in the GCC, Select Group has delivered over 5,000 homes and continues to pursue fresh and exciting opportunities that will benefit communities for generations to come.





JUMEIRAH GROUP

Jumeirah Group was founded in 1997 with the aim of becoming a hospitality industry leader through establishing a world-class portfolio of luxury hotels and resorts. A natural extension to the Jumeirah Hotels & Resorts brand, JUMEIRAH LIVING™ encapsulates the STAY DIFFERENT™ promise by offering an outstanding hospitality experience, which combines the privacy and comfort of home with the refined services of a luxury hotel. Jumeirah Group currently operates 25 properties worldwide, including the Grosvenor House Suites by Jumeirah Living in London and Jumeirah Living World Trade Centre Residence in Dubai.

Jumeirah *Living* MARINA GATE

A development by



Inventory List

Payment Plan

Percentage of Payment	Payment On
10%	On Reservation
40%	On Handover (Q2-2020)
50%	3 Years Post-Handover (8.33% every 6 months)

*100% Registration Fee Waiver.

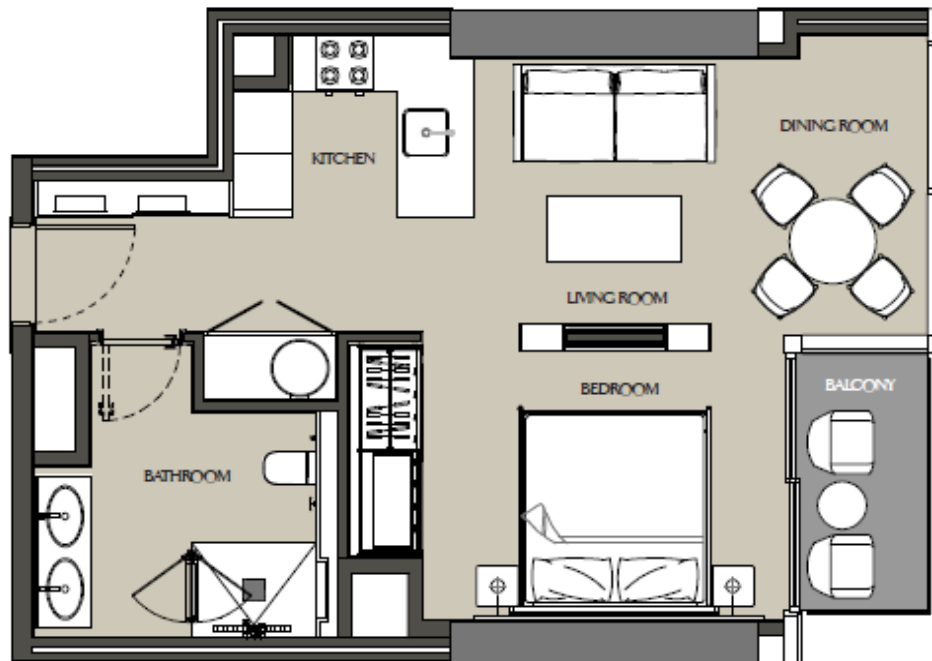
Layouts

Jumeirah
Living
MARINA GATE

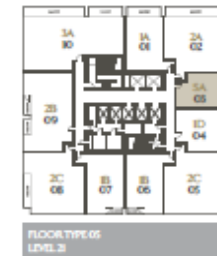
EXECUTIVE STUDIO - SA

LEVELS 19-21, 30-55

SELECT
GROUP



Apartment Area	53.25 m ²	573.18 ft ²
Balcony Area	4.03 m ²	43.38 ft ²
Total Area	57.28 m ²	616.56 ft ²

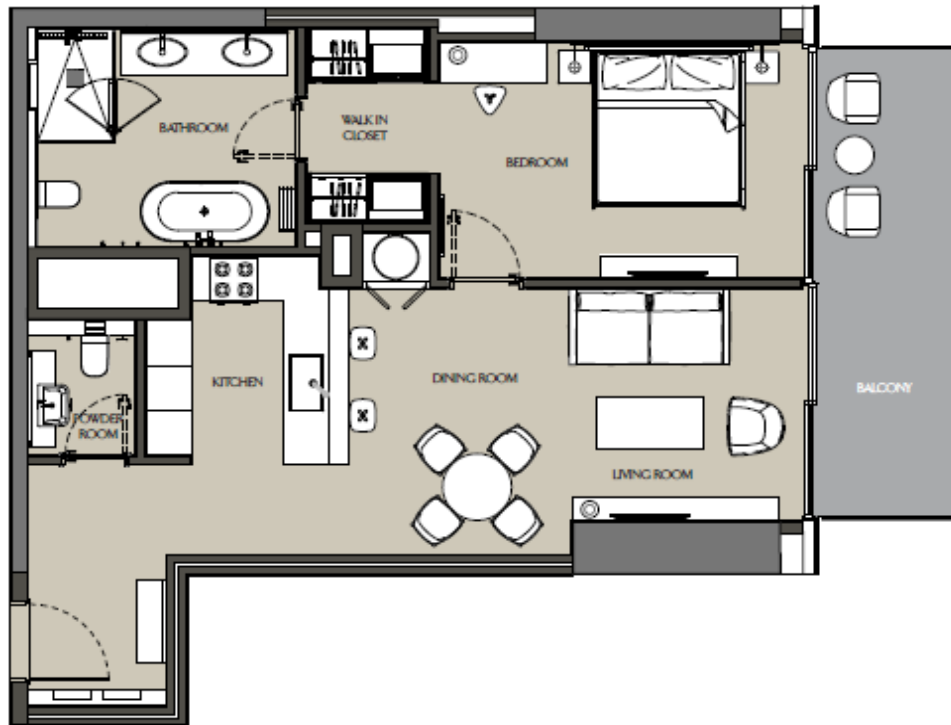


Layouts

Jumeirah
Living
MARINA GATE

ONE BEDROOM - 1A LEVELS 19-55

SELECT
GROUP

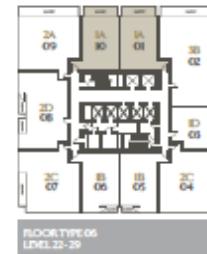
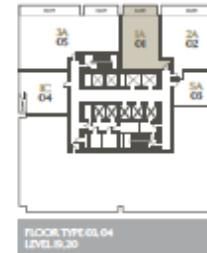


Apartment Area	78.53 m ²	845.29 ft ²
Balcony Area	12.24 m ²	131.75 ft ²
Total Area	90.77 m ²	977.04 ft ²

Marina View



Sea View

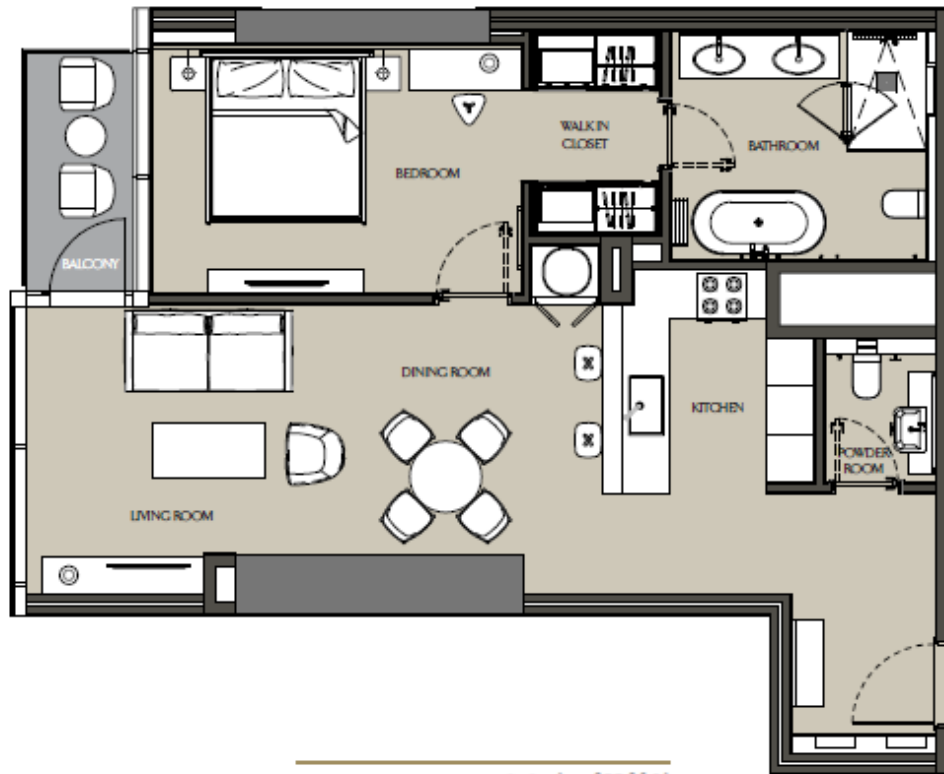


Layouts

Jumeirah
Living
MARINA GATE

ONE BEDROOM - 1B LEVELS 21-40, 43-55

SELECT
GROUP



Apartment Area	83.6 m ²	899.86 ft ²
Balcony Area	4.43 m ²	47.68 ft ²
Total Area	88.03 m ²	947.55 ft ²

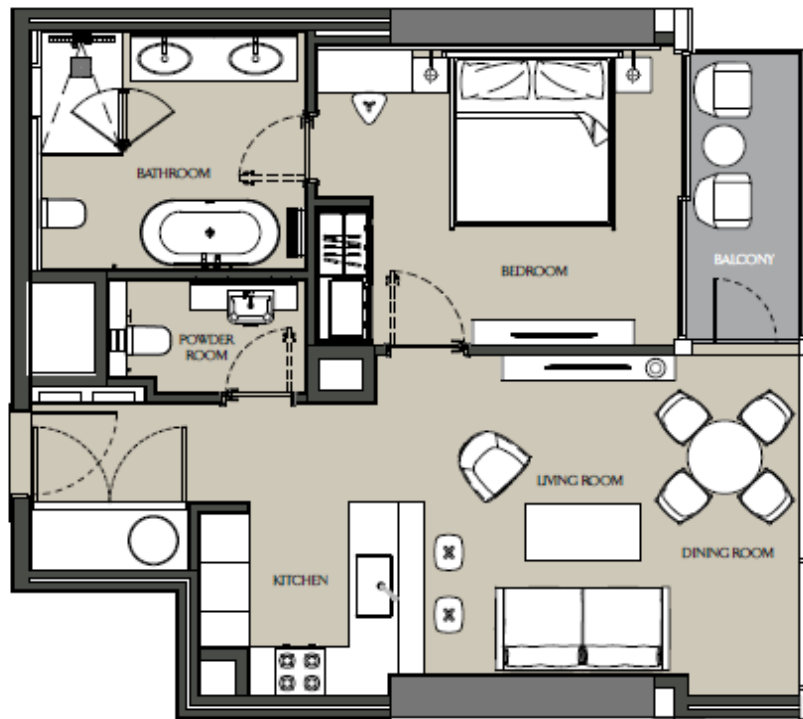


Layouts

Jumeirah
Living
MARINA GATE

ONE BEDROOM - 1D LEVELS 21-40, 43-55

SELECT
GROUP



Apartment Area	69.40 m ²	747.02 ft ²
Balcony Area	4.94 m ²	53.17 ft ²
Total Area	74.34 m ²	800.19 ft ²

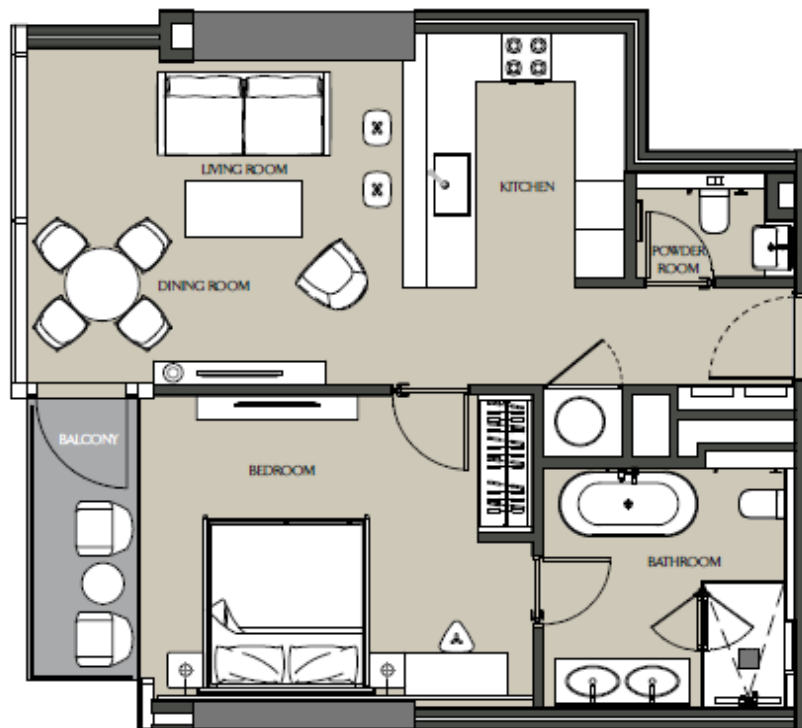


Layouts

Jumeirah
Living
MARINA GATE

ONE BEDROOM - 1E LEVELS 30-55

SELECT
GROUP



Apartment Area	69.66 m ²	749.81 ft ²
Balcony Area	5.16 m ²	55.54 ft ²
Total Area	74.82 m ²	805.36 ft ²

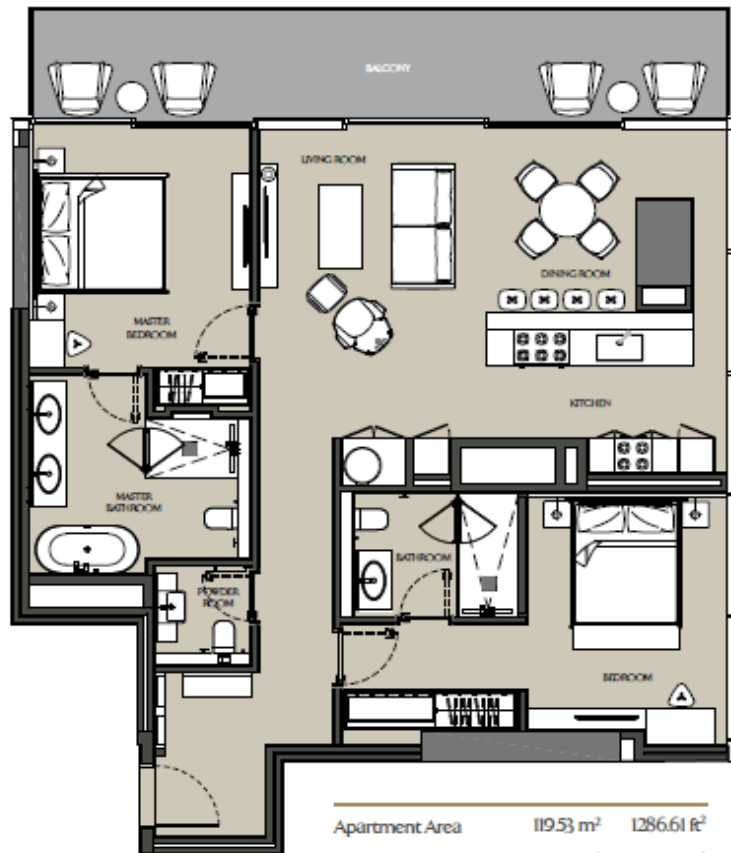


Layouts

Jumeirah
Living
MARINA GATE

TWO BEDROOM - 2A LEVELS 19-55

SELECT
GROUP



Apartment Area	119.53 m ²	1286.61 ft ²
Balcony Area	21.59 m ²	232.39 ft ²
Total Area	141.12 m ²	1519.00 ft ²

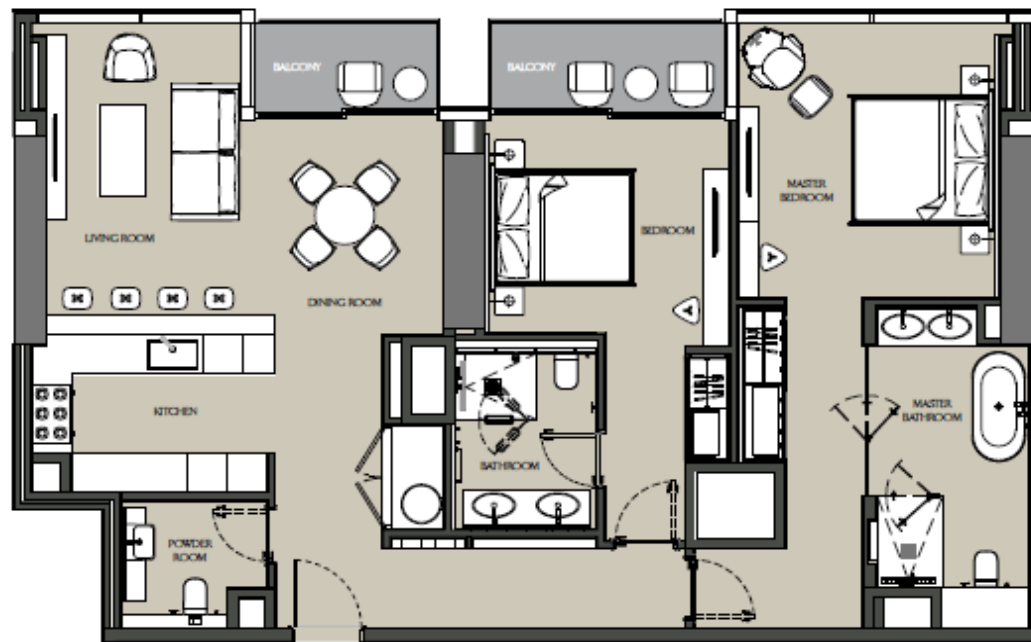


Layouts

Jumeirah
Living
MARINA GATE

TWO BEDROOM - 2B LEVEL 21

SELECT
GROUP



Apartment Area	128.66 m ²	1384.88 ft ²
Balcony Area	8.97 m ²	96.55 ft ²
Total Area	137.63 m ²	1481.44 ft ²

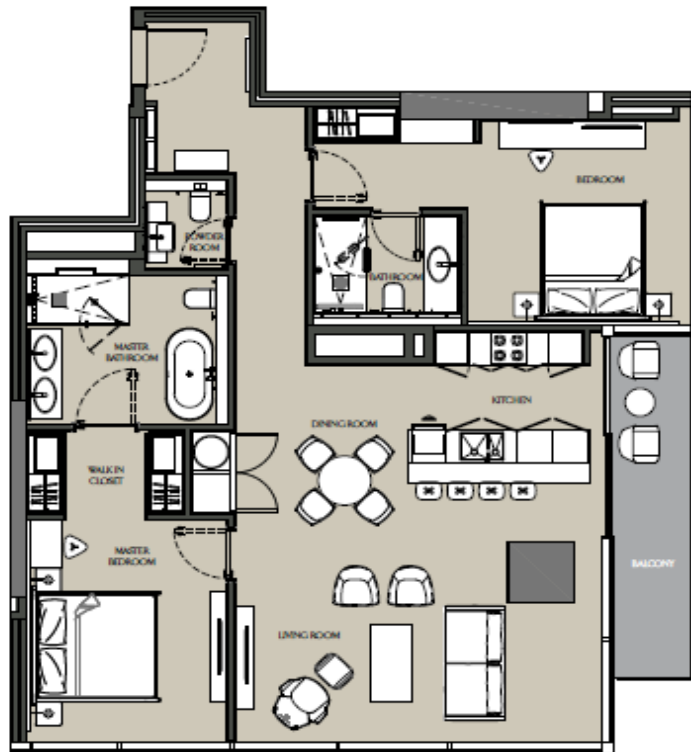


Layouts

Jumeirah
Living
MARINA GATE

TWO BEDROOM - 2C LEVELS 21-40, 43-55

SELECT
GROUP



Apartment Area	124.11 m ²	1335.91 ft ²
Balcony Area	9.00 m ²	96.88 ft ²
Total Area	133.11 m ²	1432.78 ft ²

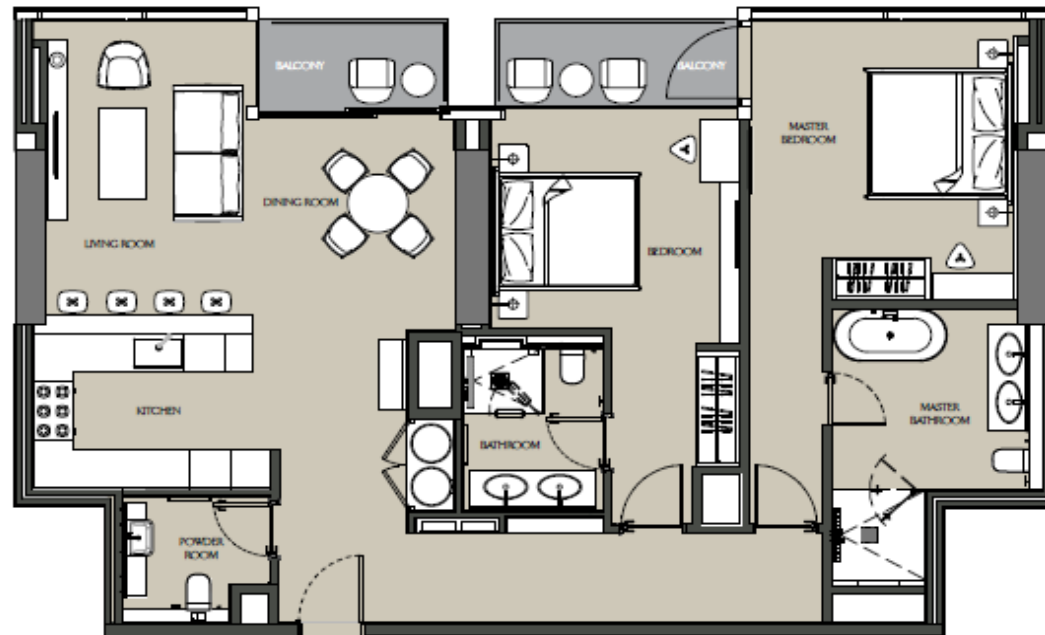


Layouts

Jumeirah
Living
MARINA GATE

TWO BEDROOM - 2D LEVELS 22-29

SELECT
GROUP



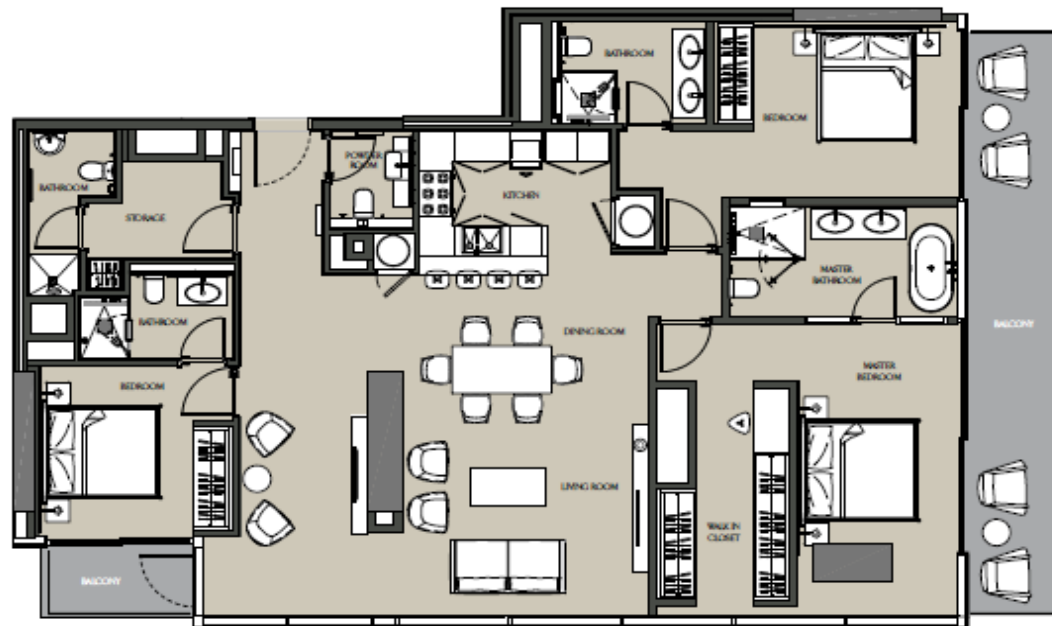
Apartment Area	1246.4 m ²	1341.61 ft ²
Balcony Area	9.28 m ²	99.89 ft ²
Total Area	1339.2 m ²	1441.50 ft ²

Layouts

Jumeirah
Living
MARINA GATE

THREE BEDROOM - 3B LEVELS 22-29, 43-55

SELECT
GROUP



Apartment Area	173.80 m ²	1870.77 ft ²
Balcony Area	25.58 m ²	275.34 ft ²
Total Area	199.38 m ²	2146.11 ft ²

Layouts

Jumeirah
Living
MARINA GATE

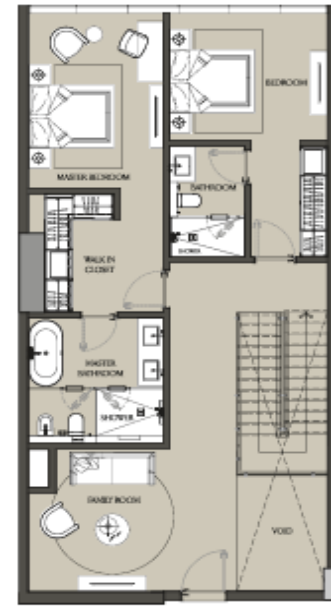
TWO BEDROOM VILLA

VILLA 05 - 301 | PODIUM 3 & 4

SELECT
GROUP



LOWER LEVEL



UPPER LEVEL



Apartment Area	199.61 m ²	2148.58 ft ²
Balcony Area	26.01 m ²	279.97 ft ²
Total Area	225.62 m ²	2428.55 ft ²

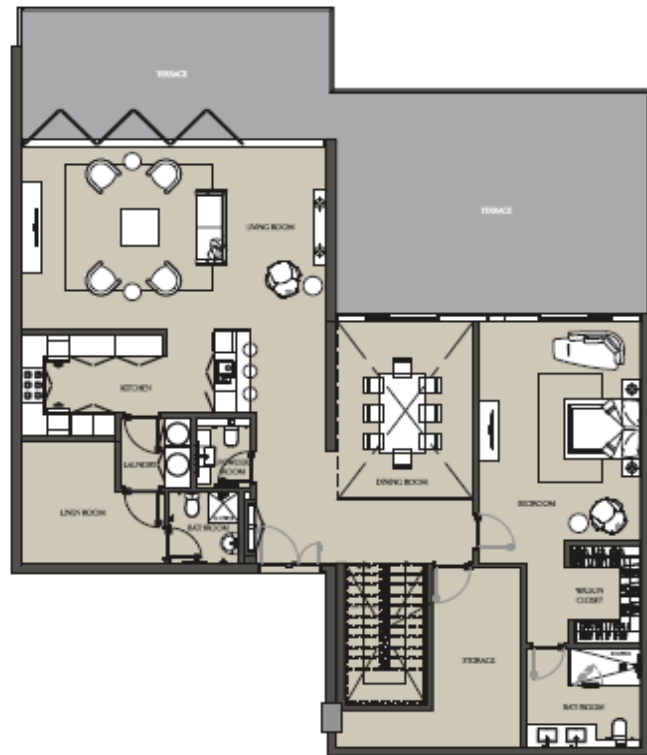
Layouts

Jumeirah
Living
MARINA GATE

FOUR BEDROOM VILLA

VILLA 12 - 502 | PODIUM 5 & 6

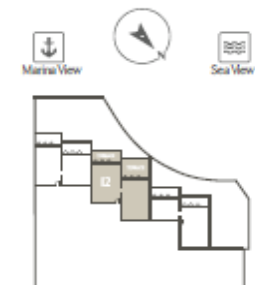
SELECT
GROUP



LOWER LEVEL



UPPER LEVEL



Apartment Area	349.82 m ²	3765.43 ft ²
Balcony Area	79.50 m ²	855.73 ft ²
Total Area	429.32 m ²	4621.16 ft ²

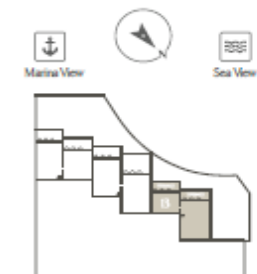
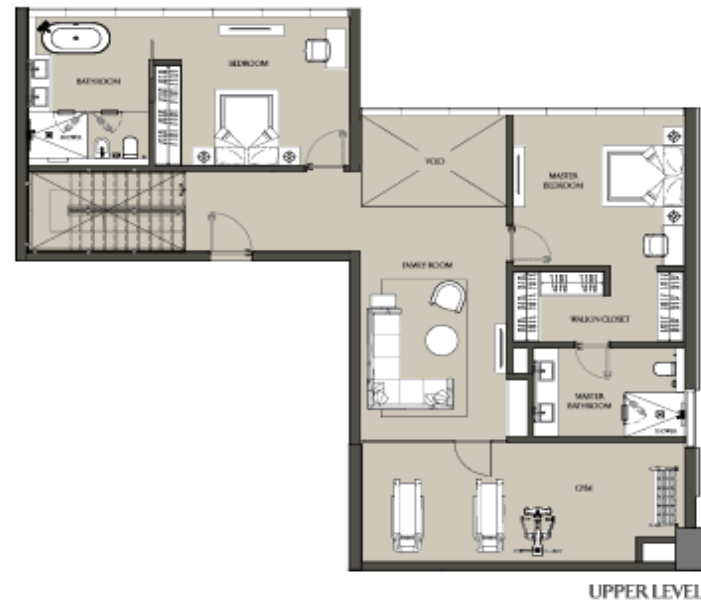
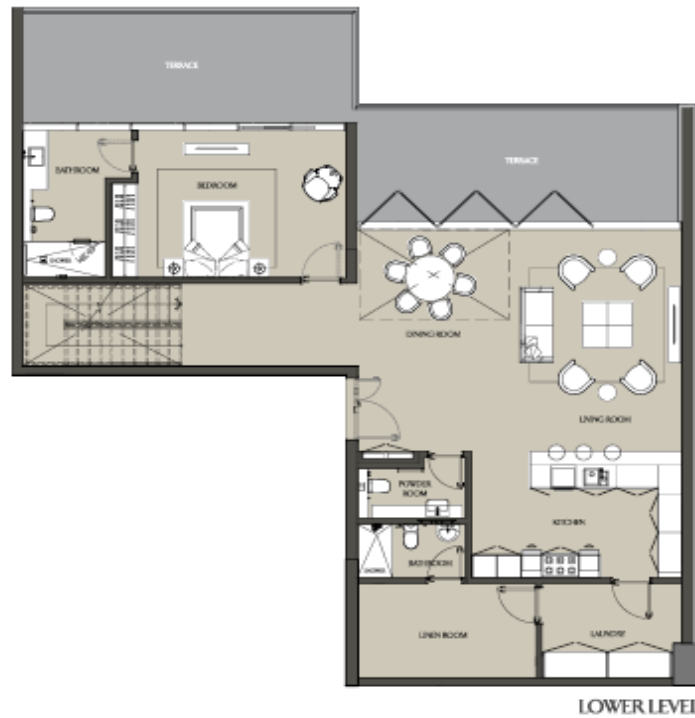
Layouts

Jumeirah
Living
MARINA GATE

FOUR BEDROOM VILLA

VILLA 13 - 503 | PODIUM 5 & 6

SELECT
GROUP



Apartment Area	28216 m ²	303714 ft ²
Balcony Area	50.09 m ²	53916 ft ²
Total Area	33225 m ²	357631 ft ²